

SEMBS

SE MICHIGAN BROMELIAD SOCIETY

AFFILIATE OF BROMELIAD SOCIETY INTERNATIONAL

SEPTEMBER / OCTOBER 2016



Vriesea bleheri



Welcome New Members!

Mohamed Aljemelawy moejem@yahoo.com 313-675-003

Judith Loesch, Sylvania, Ohio divjud@fastmail.fm

Bridget Oconnor, Ann Arbor bridgeca2@gmail.com

Please call on us if you have any questions: We may not have the answer but we always have an answer. Goff 248-380-7359; Wingert 248-798-4139

Matthaei Botanical Gardens Show Report

by Paul Wingert



For the sixth consecutive year, we co-presented our annual Fall Show on September 10-11, 2016 with the Michigan Cactus & Succulent Society. This year's show beat all expectations! We witnessed just how effective social media can be. Our partner group "created an event" on Facebook that became widely disseminated. It seemed improbable that the day before the

show, the page indicated that there were nearly 8,000 people "interested", and nearly 2,000 "planning" to attend. For our members who did attend, they will attest that the crowds were amazing! Staff at MBG confirms that the Gardens hosted estimated approximately 2,500 visitors for the weekend! They were absolutely thrilled with the impact that we created with the Show.

Our display included approximately 100 plants, with seventeen different genera represented, plus a few bigeneric hybrids, and a couple of dozen flowering plants.

Some of the terrestrial and succulent leaved bromeliads in the display included *Cryptanthus*, *Orthophytums*, *Dyckias*, *Deuterocohnias*, and an *Encholirium*.



The spiny leaved Dyckias demonstrate that there is

much to complement the plants in the Cactus & Succulent society display!



Neoregelias achieve wonderful color during our Michigan summers. While many of the “Neos” bloom earlier in the summer, from May – August, this display demonstrates why this genus is a core part of many bromeliad collections!

Mounted on driftwood, cork, cypress slabs, growing in slatted “Vanda” baskets, or simply suspended on a wire, there were numerous examples to show just how versatile and adaptable bromeliads can be.



Overview of many of the display plants. The variety and contrast of colors and textures made a strong impression on many first time visitors.

Overhead view of our featured pyramid /pot ring / floor display. Rather overwhelming colors in this photo, the plants are perhaps best appreciated when the individual plants are viewed from the periphery! Thanks to George Klosterman for providing this cool, display module!

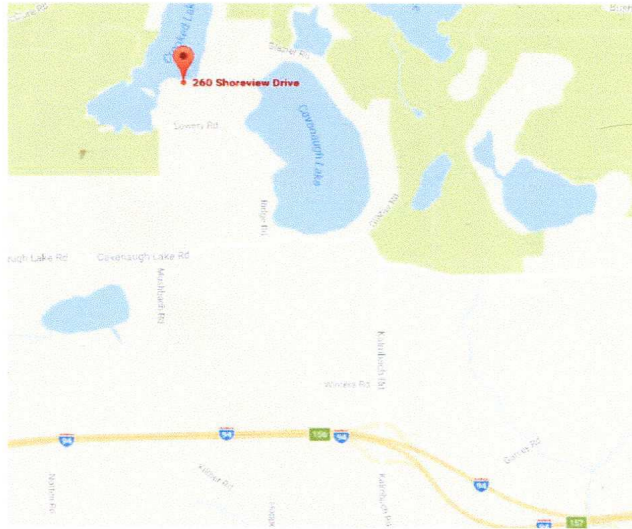
To see more photos of this year's show, visit [our society's Facebook page](#) *. In the future, we will attempt to keep our membership better informed with the use of social media.



*<https://www.facebook.com/groups/365549693516963/>

Saturday, October 15th

Join us (Drew & Malorie) for bromeliads, hot cider, donuts and homemade jam!



260 Shoreview Dr., Chelsea, MI 48118

Take Exit 156/Kalmbach rd., head north and bear left at "The Point," to stay on Cavanaugh Lake rd. Right on Musbach, becoming Shoreview dr.

Share some wisdom about overwintering bromeliads in our capricious and often harsh Michigan climate; what's worked best for you? Which genera have proved the most difficult to maintain indoors?



Our Tillandsia have spent the summer adorning a tree in our front yard. Hanging plants is great outdoors, but non-potted plants are generally less convenient inside. Where will they live this winter? A coat rack perhaps? We have no idea...



Seedlings like this Hechtia generally remain undisturbed under lights, but the move saw many relegated to the outdoor bench with all the rest